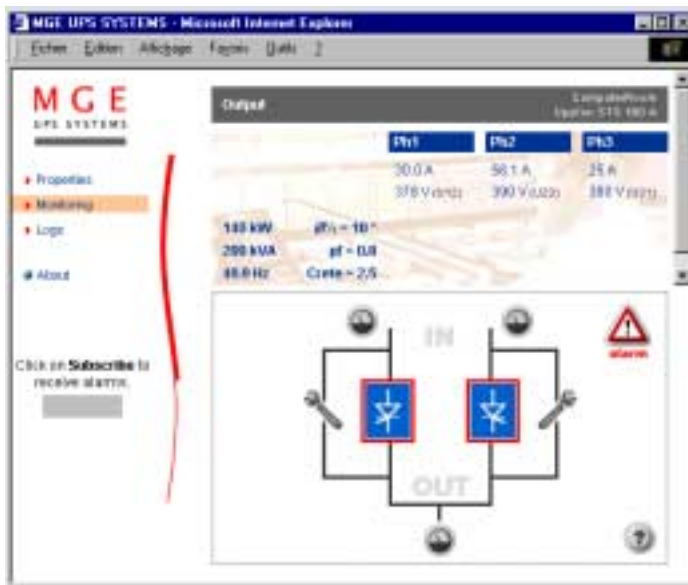


XML-Web card

Firmware upload note

XML Web card (66073)

for Upsilon STS



STS firmware upload note

▶ Card reference

- > 66073
- > this note is available for all technical levels (NT01, NT02, and future ones)

▶ STS firmware reference

- > 34003767xasa.bin release SA

▶ Function

- > Upsilon and Epsilon STS Monitoring via internet browser.

▶ Context

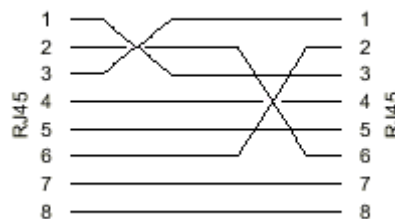
- > XML-Web card is equipped by default with the UPS monitoring release. In order to monitor the Upsilon STS installation, a specific firmware must be installed.
- > This upload operation is done through the ethernet network.

▶ Required equipment for upload operation

- > File 34003767xasa.bin. This file is available on the mgeups.com site at the URL : http://www.mgeups.com/download/soft/upsweb-pac/xml_sts.htm
 - > 1 PC with ethernet card and associated connector
 - > 1 internet browser
 - > 1 ethernet standard cable and an intranet LAN connection access for the PC and for the card
- OR**
- > 1 crossover ethernet cable when the PC is directly linked to the card.

Schematic of the crossover cable :

Crossover 10Base-T cable:



▶ **Upload operation via ethernet network**

- > 1) set the network parameters:
 - see section 4 “Network parameters configuration” of the XML-Web card installation manual (51029459).

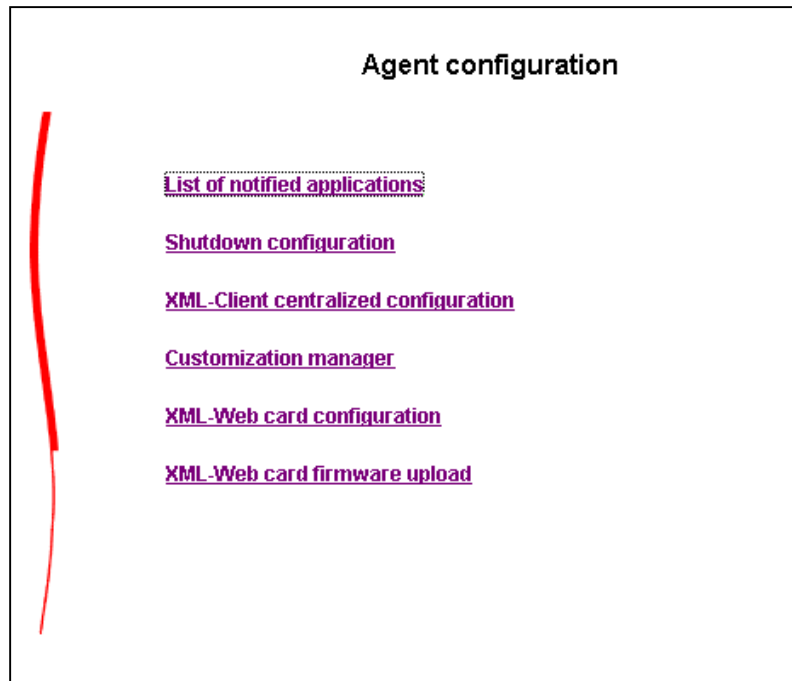
- > 2) test the network settings and the ethernet connection with the command « **ping @IP** »:
 - see section 5 “Operation” of the installation manual.

- > 3) use the browser to access to the card management page:
 - connect to the URL: **https://@IP/management/default.htm** (@IP = card IP address).

 - a warning message informs that the access to this page is carried out in secure mode (SSL). Read and accept the MGE UPS SYSTEMS certificate.

 - Enter your user name “MGEUPS” and your password “MGEUPS”

 - The **Agent configuration menu** is displayed. Click on the **XML-Web card firmware upload** menu.



- > 4) upload the new firmware:
 - indicate the path to the file 34003767xasa.bin, then click on the **Upload** button.
 - When the upload operation is complete, a message is displayed in red at the top of the page.
 - During the entire upload procedure, the card must remain on (power ON).

XML-Web card firmware upload

General parameters

Current version XML-Web card FA

Firmware to Upload

[Return](#)

- > 5) if the result is "successful", you need to restart the card (re-plug) in order to run the new firmware.
If not, repeat the step 4) without switching OFF the card.

- ▶ Check that the STS firmware is operational by accessing to the monitoring URL : http://@IP

MGE UPS SYSTEMS - Microsoft Internet Explorer

Echier Edition Affichage Favoris Quils ?

MGE UPS SYSTEMS

- ▶ Properties
- ▶ Monitoring
- ▶ Logs
- About

Click on **Subscribe** to receive alarms.

STS

ComputerRoom
Upsilon STS 160 A

STS status

| | |
|--------------------|-----------|
| Transfer: | Available |
| Output: | Powered |
| Output load level: | 95 % |
| Communication: | OK |

Sources status

| | |
|-------------------|---------------------|
| Active source: | Source 1 |
| Preferred source: | Source 2 |
| Last update: | 2003/07/24 17:00:33 |